

JScour provides a web mapping tool to display, analyse and report asset scour information allowing efficient and effective management of scour risk.

Asset owners and operators are responsible for the assessment of their structures for a variety of failure mechanisms. The number of structures to be assessed makes it vital that inspection costs are kept as low as possible.

Configuration

JScour can be tailored to your organisation's logical geographical hierarchy, e.g. Regions, Areas, Depots etc.

At risk assets may be assigned to existing networks such as roads, railways and footpaths that cross watercourses.

If carried out by JBA, scour assessment programmes can be monitored by organisations in real time. JScour includes the ability for trained and competent personnel from within organisations to perform scour assessments.* (See column to the right.)

Existing Scour Assessment Methods

- Railtrack EX2502 Group Standard Assessment (Stage 1)
- CIRIA v 1.1 (Stage 2)
- Highways Agency Scour Assessment Procedure

JScour allows users to:

- View assets in tabular or map view mode
- Quickly view key asset information including photographs and key documents
- Show graphical representation of the current scour risk to an asset
- Interrogate the full history of every scour assessment for each abutment and pier of an asset
- Generate full scour reports, branded to your organisation
- Identify required scour assessments as and when required
- Prioritise the risks without repetitive expenditure on examination of assets with a low risk of failure.
- Analyse assets both spatially and temporally
- Share asset data between neighbouring organisations

Access to JScour is controlled through users' privileges which include view only, edit, approval and administration.

*JScour is a web hosted service provided by JBA.

A full asset scour assessment and report is usually available for between £250 - £750, based on the number and the assessment method.

JScour is available on a yearly subscription basis.

Alternatively, if organisations use JScour to perform their own scour assessments, individual pricing plans are negotiable.

The screenshot displays the 'Stage 1 Assessment' data input screen. It features a table for 'RIVER AND CATCHMENT CHARACTERISTICS' with fields for 'Type of Stream', 'Bank Stability', 'Distance from river source to bridge', and '85 O.S. contour line'. Below this is a 'CHANNEL DIMENSIONS' section with fields for 'Channel width', 'Channel depth', 'Floodplain width', 'Floodplain depth', 'Channel width under bridge', and 'Channel depth under bridge'. An 'OTHER' section includes 'Bed material grading' and 'Debris blockage'. A diagram on the right shows a cross-section of a 'Single pier bridge over a channel with floodplains', labeling 'Abutment width', 'Pier width', 'Channel width', 'Floodplain width', and 'Channel depth'.

Please contact **Richard Buck**

01937 837 900
richard.buck@jbaconsulting.com

Railtrack EX2502 Group Standard Assessment (Stage 1) Data Input Screen

Our Clients

JBA has undertaken in excess of 7,000 bridge scour assessments for Local Highway Authorities, the Environment Agency, SEPA and private bridge owners.

We are retained consultants for Network Rail assisting in the risk-based management of scour at assets across the national network and providing design and construction advice in the mitigation of impacts.

Environment
Engineering
Water
Risk
Management

Advice, Consultancy and Training

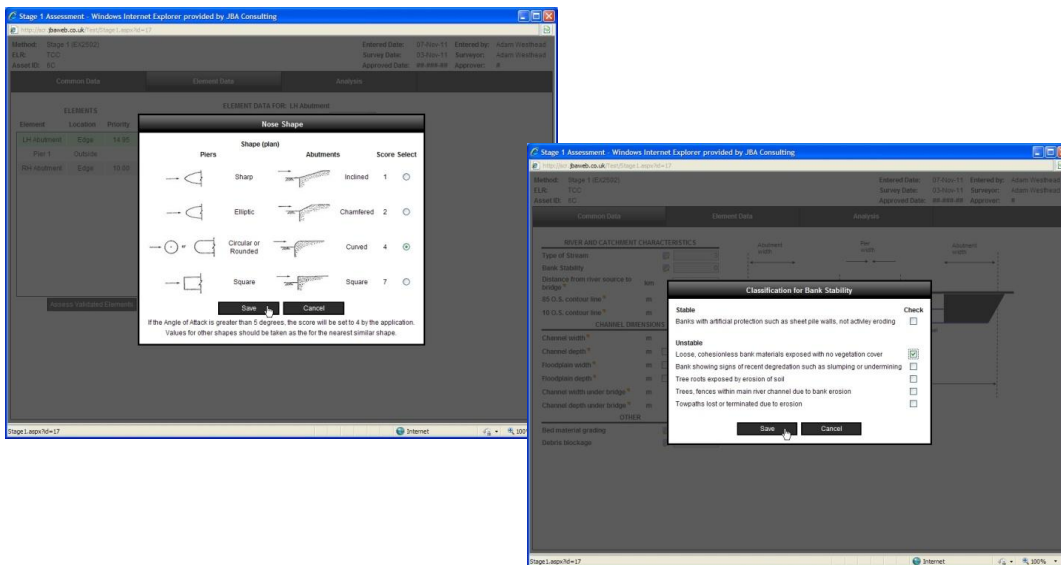
We would be pleased to discuss our capabilities in scour assessment and scour risk management with you. We offer the full range of consultancy services -including advice on strategic and risk-based assessment; detailed site assessment; supervision of inspection and survey; and scour protection design and construction supervision.

JBA also provides training in the management of flood risk to bridges. For further information and to arrange attendance at scheduled or bespoke courses view the training area on our website: www.jbaconsulting.com/training/managementoffloodrisktobridges

24 Grove Island
Corbally
LIMERICK
Co Limerick
Tel 061 345 463

JBA Consulting
Engineers and
Scientists Ltd

Reg no: 444752



Railtrack EX2502 Group Standard Assessment (Stage 1) Data Input Screen

Related Services

- Asset data capture from paper records
- Asset data capture on site
- Software development
- Culvert analysis
- JScreen
- Culvert inspections
- Drainage design
- Flood warning systems

We would love to talk to you.

Please contact us on 060 345 463 or email Richard Buck: richard.buck@jbaconsulting.com
www.jbaconsulting.com